



## CONTACT

Jen Dragon, Director  
Cross Contemporary Partners  
[crosscontemporarypartners@gmail.com](mailto:crosscontemporarypartners@gmail.com)  
845-399-9751

Woodstock, NY- On December 10, 2021, Cross Contemporary Partners is pleased to present a virtual three dimensional solo exhibition of works on paper by John Kingerlee. The exhibition is presented online in a virtual gallery space that can be accessed at <https://bit.ly/kingerleesolo>. This is John Kingerlee's first solo show with the gallery and the exhibition runs through July 31, 2022.

The artworks in this exhibition have been curated from recent collages on paper created since 2014. These abstract works on paper are explorations in space and being using thick paint and integrating collaged elements. These artworks reflect the light and rocky terrain of Kingerlee's home on the remote Beara peninsula in County Cork. The raised surface textures reveal hints of landscapes, figures, architecture as well as purely abstract presences and the collages are like extemporaneous diaries as past and present layers collide. Kingerlee's artworks reveal struggle and effort yet finish with a calm beauty that exists because of this wrestling of paint, brush and vision and this history is part of their identity. The art critic John Mendelsohn writes that "Kingerlee's paintings are literally in touch with their subjects, simultaneously tactile and visual. The intimacy of this work leaves no space between artist and subject, viewer and the experience of seeing."

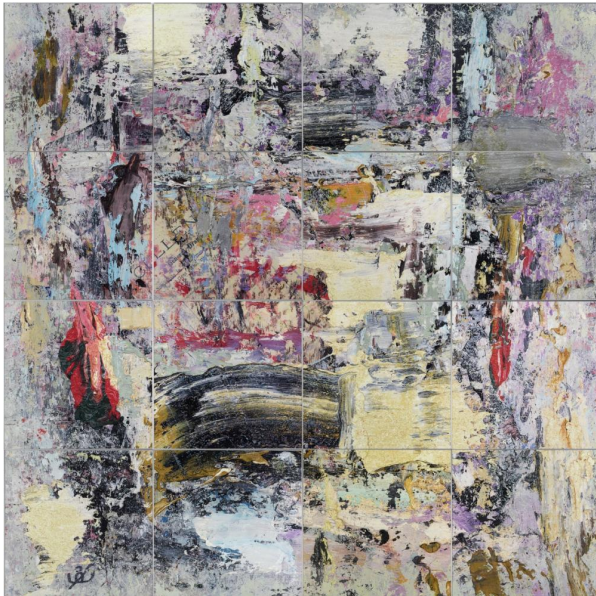
From his first exhibition in 1967 in London, England, Kingerlee has continued to show throughout the United Kingdom and internationally in the United States and China. John Kingerlee has had solo exhibitions at The National Art Museum of China (Beijing, CN), The University of Texas at Austin, (Austin, TX), The Phillips Museum (Lancaster, PA), Appleton Museum of Art (Ocala, FL), Museum of the Southwest, (Midland, TX), Wichita Falls Museum of Art (Wichita Falls, TX), The Parthenon Museum, (Nashville, TN) and group exhibitions in Hong Kong (CN), New York City, Los Angeles (US) and St. Ives (UK) among many others. Mr. Kingerlee resides in Skibereen, Co. Cork, Ireland.

For more information, please contact:

Jen Dragon, Director  
Cross Contemporary Partners  
34 Tinker Street  
Woodstock, NY 12498  
[www.crosscontemporarypartners.com](http://www.crosscontemporarypartners.com)  
845-399-9751

Images:

1. *Cullens* © John Kingerlee, collage on paper, 50" x 72.5"
2. *Those Early Days in Cornwall (Srik Series)* © John Kingerlee 2014-18, collage and paint on indian paper 16" x 16" inches
3. *Untitled II (Srik Series)* © John Kingerlee 16 panels each 24x24 inches
4. *THE YOUNG MAN'S STORY (SRIK SERIES)* © John Kingerlee, 2016 Collage on Indian Paper 17" x 20" inches
5. *Untitled I (Srik series)* © John Kingerlee collage on indian paper



*Cullens* © John Kingerlee 2016



*THOSE EARLY DAYS IN CORNWALL (SRIK SERIES)* © John Kingerlee 2014-18

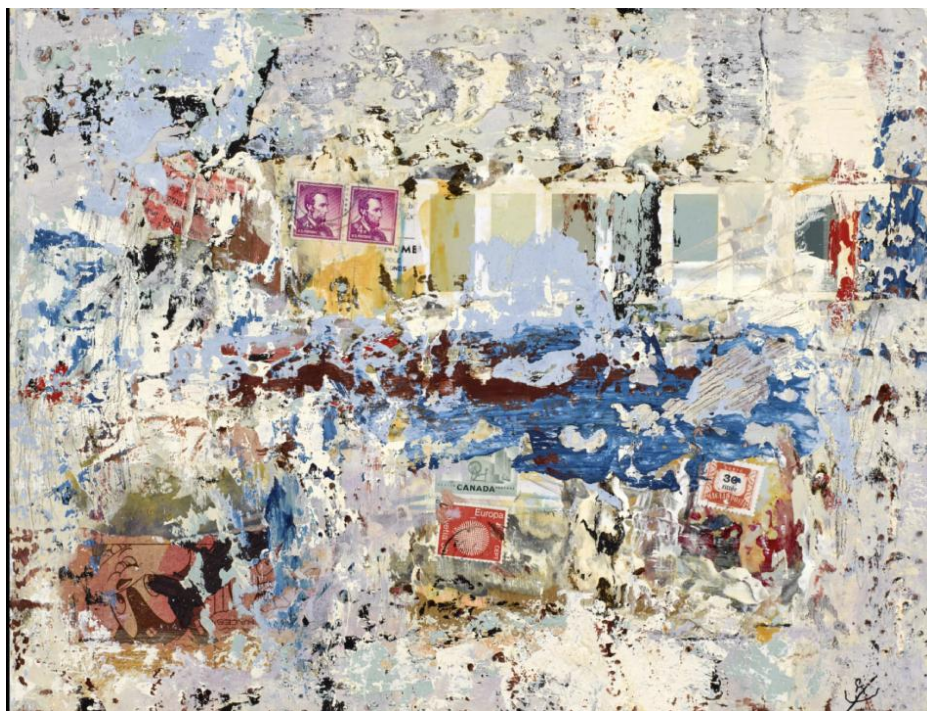




*Untitled II (Srik Series)* © John Kingerlee  
16 panels each 24x24 inches



*THE YOUNG MAN'S STORY (SRIK SERIES)*  
© John Kingerlee, 2016  
Collage on Indian Paper



*Untitled I (Srik series)* © John Kingerlee collage on indian paper